

The Center for Earth-Based Judaism

# DESIGN CONCEPT

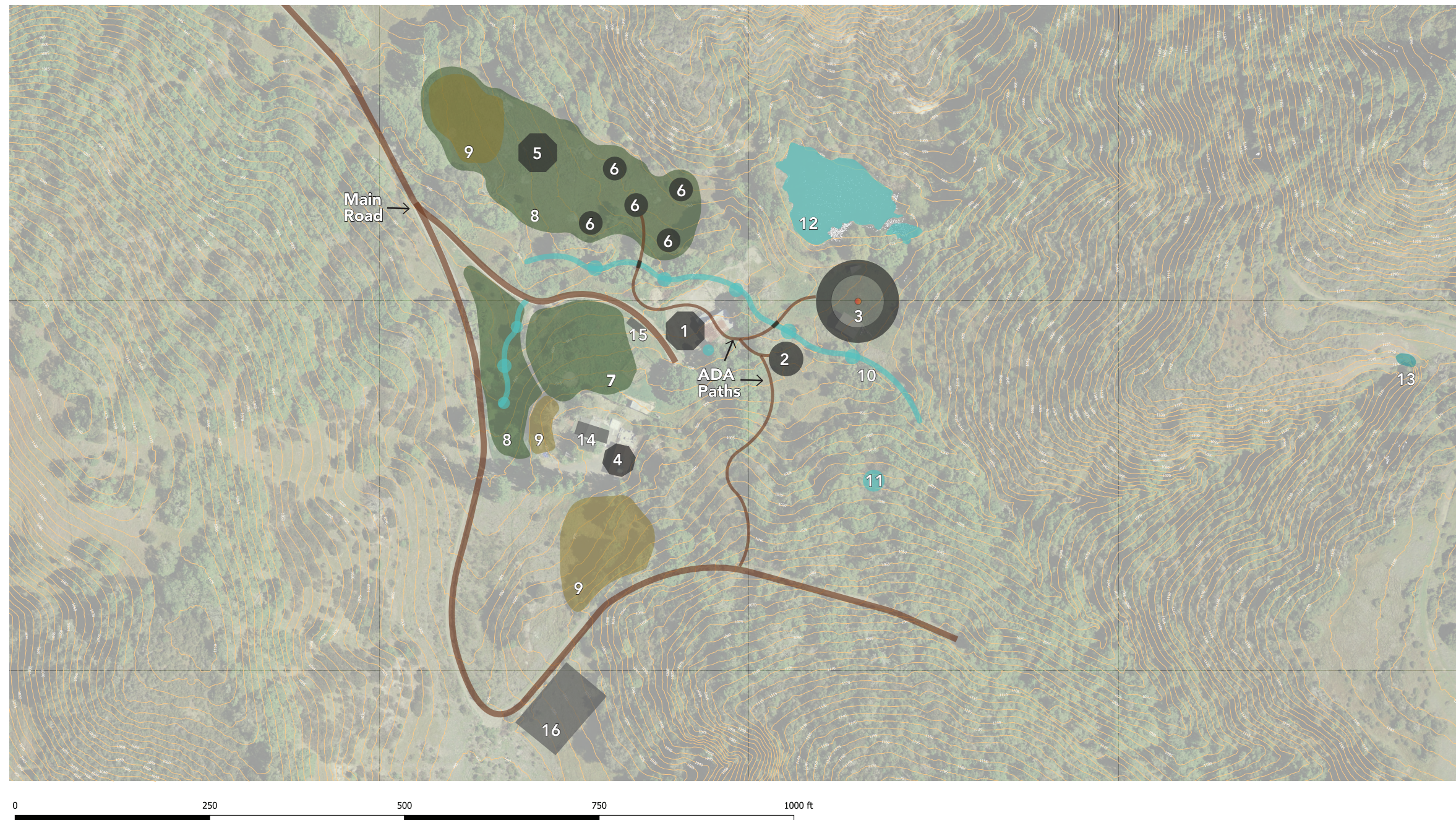
DRAFT | August 2022





# Center for Earth Based Judaism

## Site Plan



0 250 500 750 1000 ft

Scale in feet when printed on 24x36" sheet

### Legend

- |   |                             |   |                           |    |               |    |                  |
|---|-----------------------------|---|---------------------------|----|---------------|----|------------------|
| 1 | Welcome Pavilion            | 5 | Classroom, Workshop Space | 9  | Camping Areas | 13 | Waterfall        |
| 2 | Kids and Family Area        | 6 | Ancestral Skills Areas    | 10 | Rain Gardens  | 14 | Main Parking     |
| 3 | Ceremony Space, Sacred Fire | 7 | Terraced Gardens          | 11 | Rain Tank     | 15 | ADA / Unloading  |
| 4 | Staff Area                  | 8 | Orchard                   | 12 | Existing Pond | 16 | Overflow Parking |



# 1 Welcome Pavilion

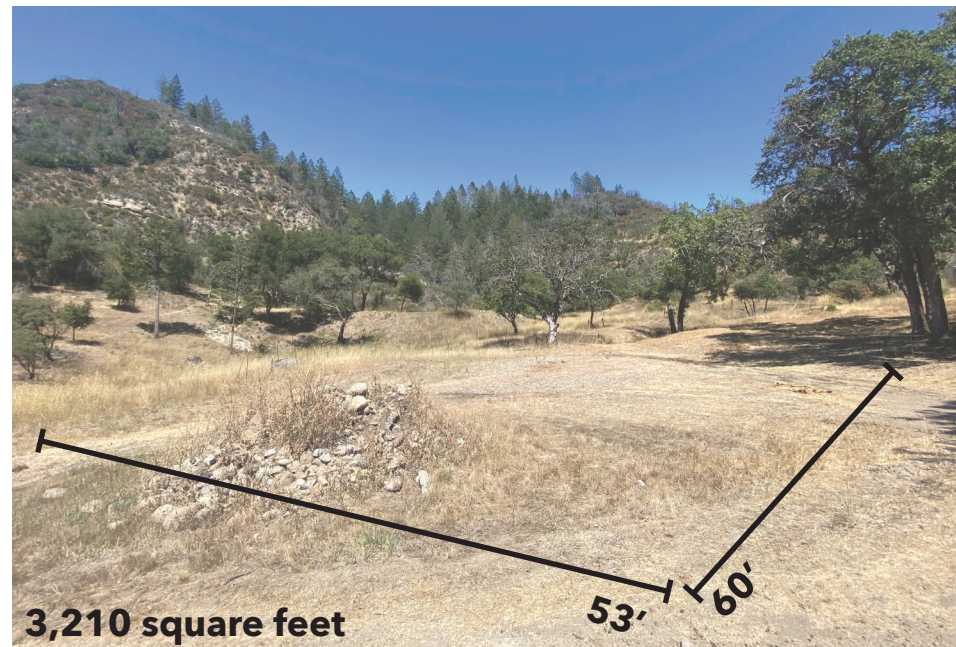
## VISION

- Covered and shaded
- Welcome and orientation area
- Feasting Hall
- Flex/Meeting space
- Small food prep area with sink
- Wood-fire oven
- Roof water sent to Transfer Tank

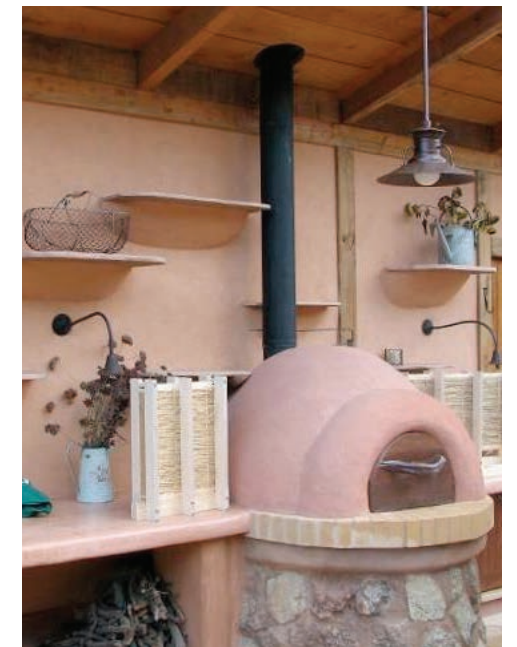
## SITE DETAILS

- Approximately 3,210 square feet of space total
- 100 person seating capacity for dining

## CURRENT SITE CONDITIONS



## FUTURE DESIGN INSPIRATION





## 2 Kids and Family Area

### VISION

- Covered and shaded
- Family area for parents and children
- Could fit approx 30 people total
- Learning space
- Place space
- Resting space
- Nearby the main Ceremony Space

### SITE DETAILS

- Approximately 3,000 square feet of space total
- 2 Yurt platforms already on site (22' diameter each)

### CURRENT SITE CONDITIONS



### FUTURE DESIGN INSPIRATION





# 3 Ceremony Space & Sacred Fire

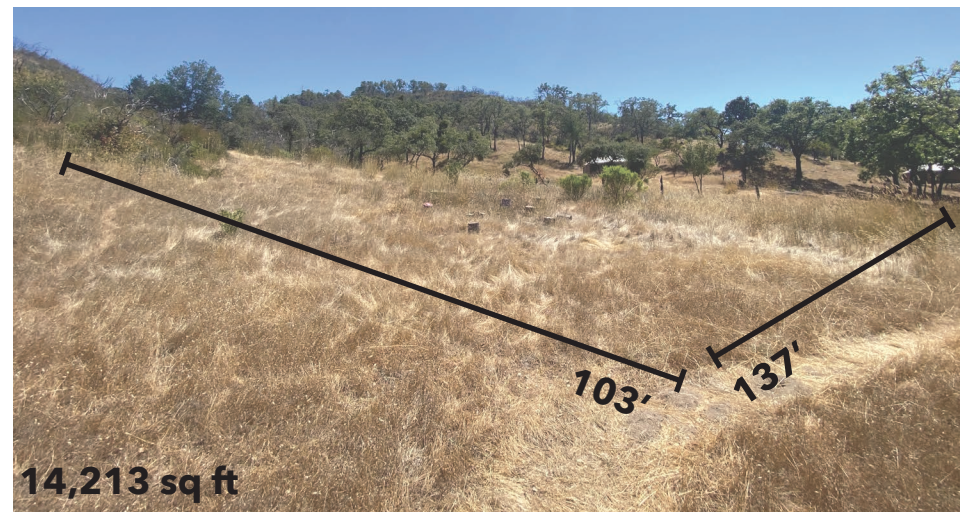
## VISION

- Tent of Meeting and Ceremony Space
- Sacred Fire in center (when desired)
- Large trellis and grape vines for permanent shade
- Benches
- Sukkah and large share area can be built off of trellis enclosing the gatherings space
- Sacred Fire space next to the structure

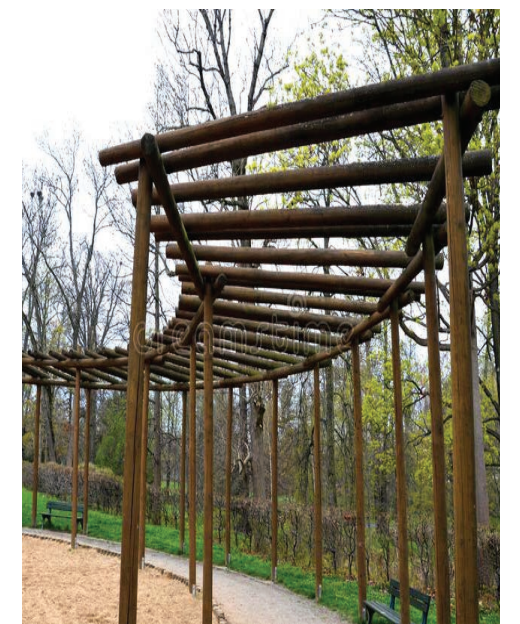
## SITE DETAILS

- Approximately 14,213 square feet of space total
- 200+ person capacity

## CURRENT SITE CONDITIONS



## FUTURE DESIGN INSPIRATION





# 4 Staff Area and Main Kitchen

## VISION

- Covered and shaded
- Materials storage
- Main kitchen area for staff to cook for events and retreats
- Larger food prep kitchen (grey-water feeds into terraced gardens)
- Flex/Meeting space
- Roof water sent to transfer tank
- 

## SITE DETAILS

- Approximately 1,154 square feet of space total
- About 40 person capacity

## CURRENT SITE CONDITIONS



## FUTURE DESIGN INSPIRATION





# 5 Classroom / Workshop Space

---

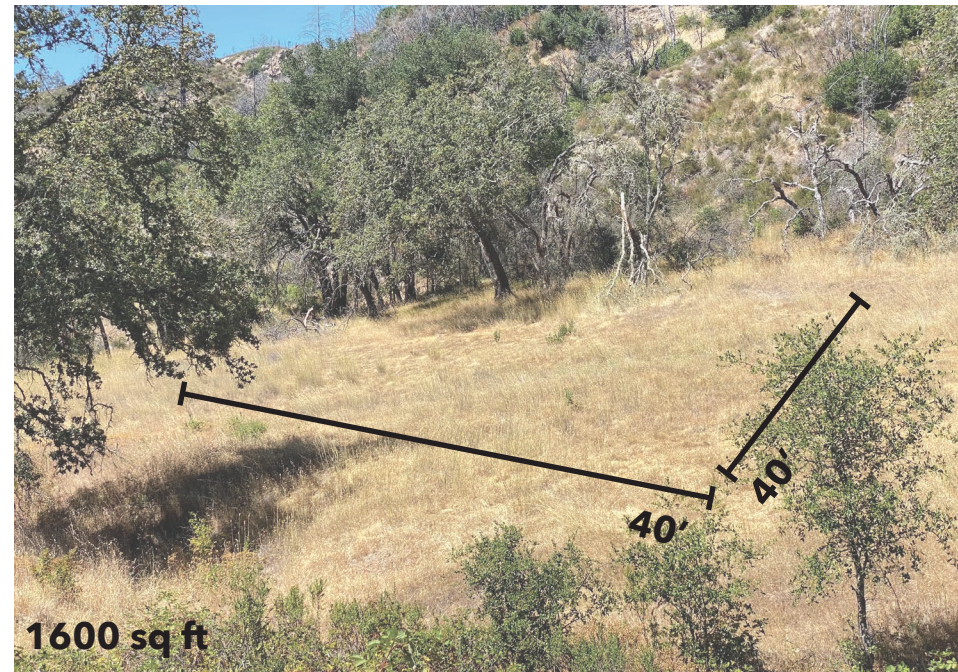
## VISION

- Outdoor, covered
- Roof collects water for storage tank
- Whiteboard/chalkboard
- Bookshelf / Library
- Benches, desks, tables

## SITE DETAILS

- Approximately 1600 square feet of space total
- 30+ person capacity

## CURRENT SITE CONDITIONS



## FUTURE DESIGN INSPIRATION





# 6 Ancestral Skills Areas

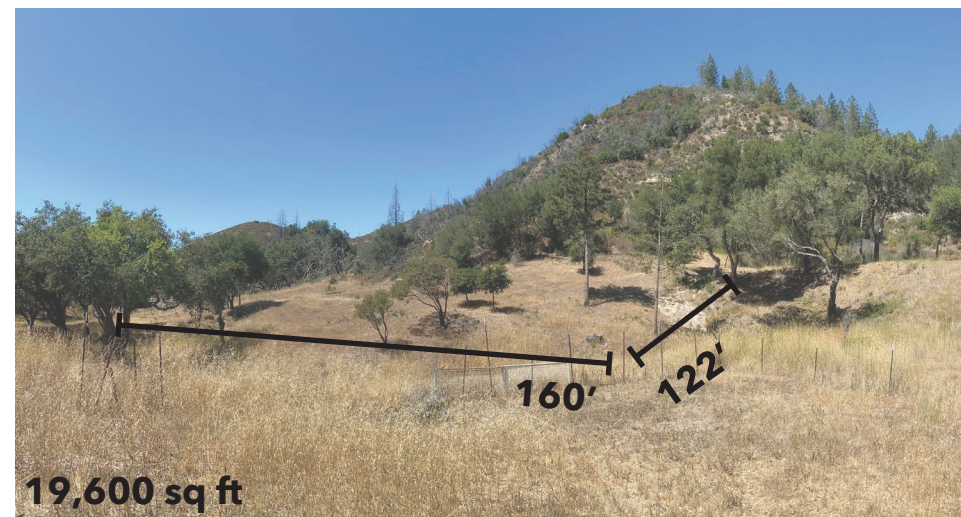
## VISION

- Cluster of shaded, open air spaces for workshops and learning
- Ancestral skills such as hide tanning, calligraphy with oak acorn ink, lulav making, wood carving mezuzah, etc.
- Easily adaptable space/ Multi-functional for other uses
- Amidst beautiful orchard

## SITE DETAILS

- Approximately 19,600 square feet of space total
- Each space would be approximately 24' Diameter or 24'x24'
- 25+ person capacity in each space

## CURRENT SITE CONDITIONS



## FUTURE DESIGN INSPIRATION





# 7 Terraced Gardens

## VISION

- Permaculture perennial plantings
- Beautiful entrance way gardens
- Accessible location for maintenance and hands-on workshops and community interaction

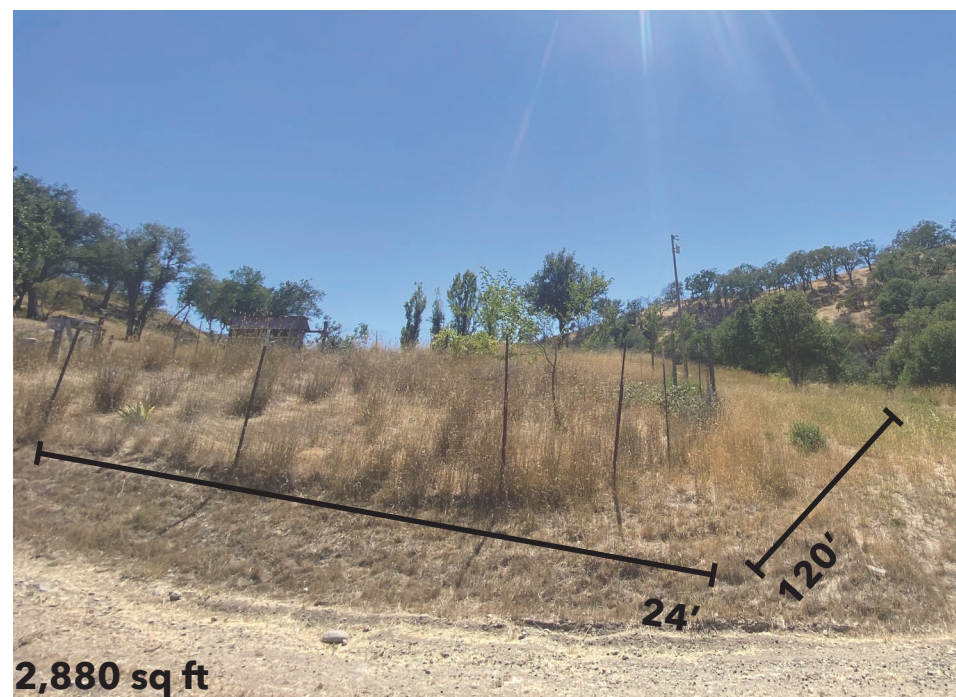
## SITE DETAILS

- Approximately 2,800 square feet of space total for plantings

## CURRENT SITE CONDITIONS



## FUTURE DESIGN INSPIRATION





# 8 Orchard

## VISION

- Culturally significant fruit trees such as apple, etrog, fig, pomegranate, and more
- Creates shade, fruit, and material for ancestral skills workshops
- Beautiful aesthetic at the entrance to CEBJ

## SITE DETAILS

- Approximately 51,465 square feet of space total for fruit trees and perennial plantings. This is equal to almost 1.25 acres!

## CURRENT SITE CONDITIONS



## FUTURE DESIGN INSPIRATION





# 9 Camping Areas

## VISION

- Various spaces throughout the site
- Potential for 150+ person capacity
- Could have variety of options: platforms, glamping, or pitch-your-own tent
- Camping Site (A) is terraced camping, likely with platforms build into the slope. Close to parking
- Camping Site (B) is an area that will be graded flat. Also close to parking
- Camping Site (C) is further our in the orchard, and will be graded flat

## SITE DETAILS

- Camping Site (A) is approximately 1,872 sq ft of total space
- Camping Site (B) is approximately 10,080 sq ft of total space
- Camping Site (C) is approximately 4,556 sq feet of total space

## CURRENT SITE CONDITIONS



## FUTURE DESIGN INSPIRATION





# 10 Rain Gardens

## VISION

- Restoration of the creek bed and riparian ecosystem
- Helps catch, store, and filter water
- Supports slowing down of water into gully
- Beautification and greenery in a dry landscape

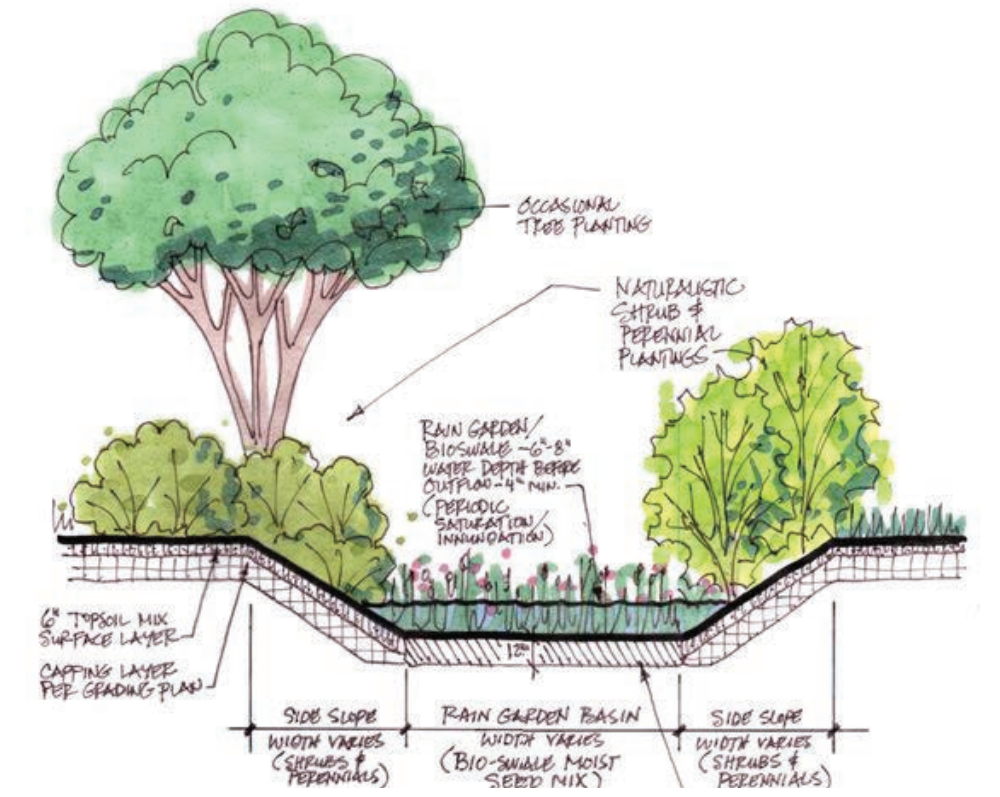
## SITE DETAILS

- Approximately 669' long

## CURRENT SITE CONDITIONS



## FUTURE DESIGN INSPIRATION





# 11 Existing Pond

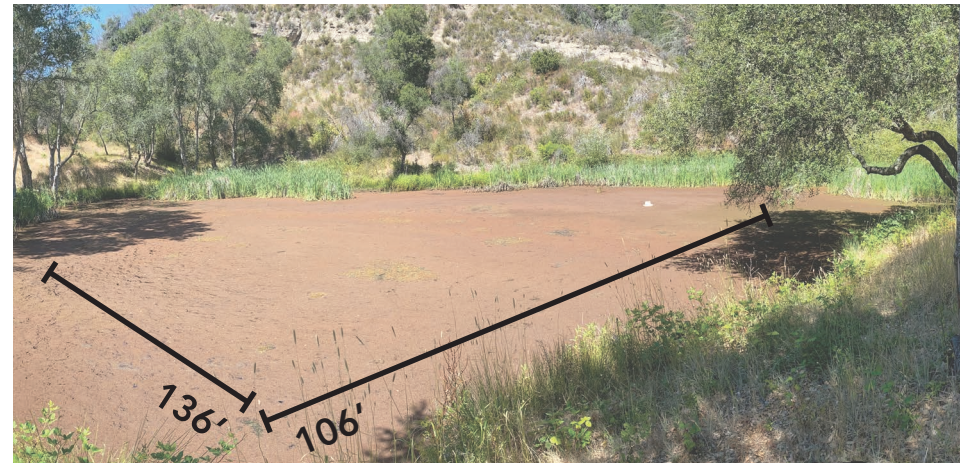
## VISION

- Restoration of the pond and riparian ecosystem
- Remove invasive algae/bacteria in water
- Restore aquatic life
- Use existing pond, to envision a possible mikvah nearby

## SITE DETAILS

- Approximately 14,416 sq ft total pond area. (An average swimming pool is 512 sq. feet. Pond = 28 pools)

## CURRENT SITE CONDITIONS



## FUTURE DESIGN INSPIRATION





# 12 Waterfall

---

## VISION

- Beautiful flowing waterfall, ideally year round
- A place to hike to, rest, find peace

## SITE DETAILS

- Currently an ephemeral waterfall
- Flows down into the gully

## CURRENT SITE CONDITIONS



## FUTURE DESIGN INSPIRATION





# Road & Parking Infrastructure

**13** Main Road to CEBJ

**14** Main Parking

**15** ADA Parking, Unloading Zone





# Water Flows





# Soil Types



0 250 500 750 1000 ft

Scale in feet when printed on 24x36" sheet

Wilderness Torah-5ft Contours- Site Map -  
Created by Foresite Mapping LLC  
Image and Contours Derived from Sonoma Veg Maps LIDAR database





אֱמֶת מֵאֶרֶץ תִּצְמַח

Truth will sprout from the earth.

PSALM 85:12